

PW

PROWASHROOM

1300W STAINLESS STEEL

Wall Mounted Hand Dryer



www.hygienesuppliesdirect.com

The Pro-Washroom Hand Dryer Range

Upgrade to the future of hand drying with **Pro-Washroom Hand Dryers** - an eco-friendly, hygienic, and energy-efficient solution for any modern washroom. Designed for superior performance, these dryers ensure fast drying in just 10 seconds while using a powerful yet energy-saving motor.

With a sleek, contemporary design and ergonomic features, these hand dryers add a touch of style to your space while delivering maximum efficiency. Available in two premium finishes - White ABS Plastic and Die-Cast Stainless Steel - they effortlessly blend into any washroom aesthetic.

For optimal performance and safety, professional installation by a qualified expert is required.

Upgrade today and experience the perfect balance of style, speed, and sustainability!



PRW285143



PRW285146

For more **ProWashroom** products scan the QR code:



PRW285185



PRW285188



PRW285175



PRW285179

IMPORTANT

Installer and users please note



Please read the entire instruction manual before using the product and then save it for future reference. We reserve the right for any errors in text or images and any necessary changes made to technical data. If you have any questions concerning technical problems please contact our Customer Services on 0800 091 3171.



PRW285179

Introduction

Thank you for choosing this 1300W Stainless Steel Wall Mounted Hand Dryer. This product is designed to meet the most stringent quality, performance and safety requirements. This guide aims to improve your understanding of your new hand dryer by providing simple and informative instructions.

Contents

Pro-Washroom Hand Dryer Range	2	Installation area	12
Important.....	4	Step-by-step wall mounting.....	12
Introduction	5	Operating.....	14
Safety & installation guidelines.....	6	PAT testing.....	14
Key features & benefits.....	7	Cleaning	15
Product features.....	8	Environmental responsibilities.....	15
Technical specification.....	8	Warranty.....	16
Installation	10		
Assembly parts	11		

Safety & installation guidelines

Important: Please read all instructions carefully before installation.

- Compliance with Regulations – Ensure all wiring follows current UK IEE regulations or the relevant electrical standards in your country.
- Qualified Installation Required – This hand dryer must be installed by a qualified electrician.
- Check Power Supply Compatibility – Confirm that the voltage, frequency, and phase match the specifications on the dryer's rating label.
- Restricted Use – This appliance is not suitable for individuals (including children) with reduced physical, sensory, or mental capabilities unless supervised by a responsible person.
- Child Safety – This is not a toy. Ensure children do not play with the appliance.
- Avoid Excessive Moisture – Do not expose the hand dryer to excessive water or damp conditions.
- Do Not Modify or Disassemble – Any servicing, repairs, or modifications must be performed by a qualified technician.
- Proper Electrical Isolation – The dryer should be connected via a fused spur isolator switch capable of disconnecting all poles with a minimum 3mm contact separation.
- Ensure Proper Grounding – The unit must be correctly earthed for safe operation.
- Residual Current Device (RCD) Recommendation for enhanced safety – For additional protection, we recommend installing an RCD (residual current device) with a 30mA residual operating current in the circuit.
- Use Appropriate Power Supply – Use a single-phase 220-240V 50Hz cable with a 20A rated current and dedicated 15mA-type rated operating current.
- Wear Protective Gear – The unit should be isolated from the power supply when cleaning or inspecting the unit.
- Damaged Power Cable? – If the supply cable is damaged, it must be replaced by a certified service engineer to prevent hazards.
- Unsuitable Installation Locations – Do not install the hand dryer in:
 - Areas with temperatures below -10°C or above 40°C
 - Locations exposed to direct water contact
 - Direct sunlight exposure
 - Condensation-prone environments
 - Areas with corrosive, neutral, or reductive gases

By following these guidelines, you ensure safe, efficient, and long-lasting operation of your hand dryer.

Key features & benefits

- **Fast & Efficient Drying** – Dries hands in less than 10 seconds, reducing wait time and improving washroom efficiency.
- **Eco-Friendly & Energy Efficient** – Uses low power consumption, helping businesses save on energy costs while reducing their carbon footprint.
- **Hygienic & Touch-Free Operation** – Features automatic infrared sensors, eliminating the need for physical contact and reducing the spread of bacteria and germs.
- **Ultra-Quiet Performance** – Designed with low-noise technology, making it ideal for offices, schools, and environments where noise reduction is essential.
- **Durable & Long-Lasting** – Built with high-quality materials like White ABS Plastic or Die-Cast Aluminium, ensuring longevity and resistance to wear and tear.
- **Overheat & Overload Protection** – Equipped with automatic safety shut-off to prevent overheating and electrical overloads.
- **Water-Resistant Design** – IPX4-rated (or higher) for enhanced protection against moisture and splashes, ensuring durability in washroom environments.
- **High-Speed Airflow** – Optimised air-blast system for powerful yet gentle drying, offering a comfortable hand-drying experience.
- **Compact & Space-Saving** – Designed to fit even in small washrooms, making it perfect for restaurants, offices, and retail spaces.
- **Easy Installation & Maintenance** – Comes with a simple mounting system and minimal maintenance requirements for hassle-free use.
- **Low Running Costs** – Designed for cost-effective operation, helping businesses save on both maintenance and energy bills.
- **Environmentally Friendly Alternative** – Reduces reliance on paper towels, leading to less waste and lower long-term expenses.

Upgrade your washroom today with Pro-Washroom Hand Dryers - where innovation meets efficiency!



Product features

- Sleek, curved, contemporary design
- Ultra-quiet performance
- Ergonomic features
- Smart infrared activation - ensuring a touch-free, hygienic operation
- Eco-friendly, hygienic and energy-efficient
- Powerful 1300W
- Automatic overheat cut-off
- Fast drying in just 8-10 seconds
- Warm intelligent air module



Technical specification

Wall mounted hand dryer model:
PRW285179

Water-resistant design: IPX4

Rated power: 1300W

Rated frequency: 50/60Hz

Voltage: 220V-240V, 110V-130V

Protection electric shock:

Size: W285 x D173 x H325mm

Main features: Overheat & overload
protection

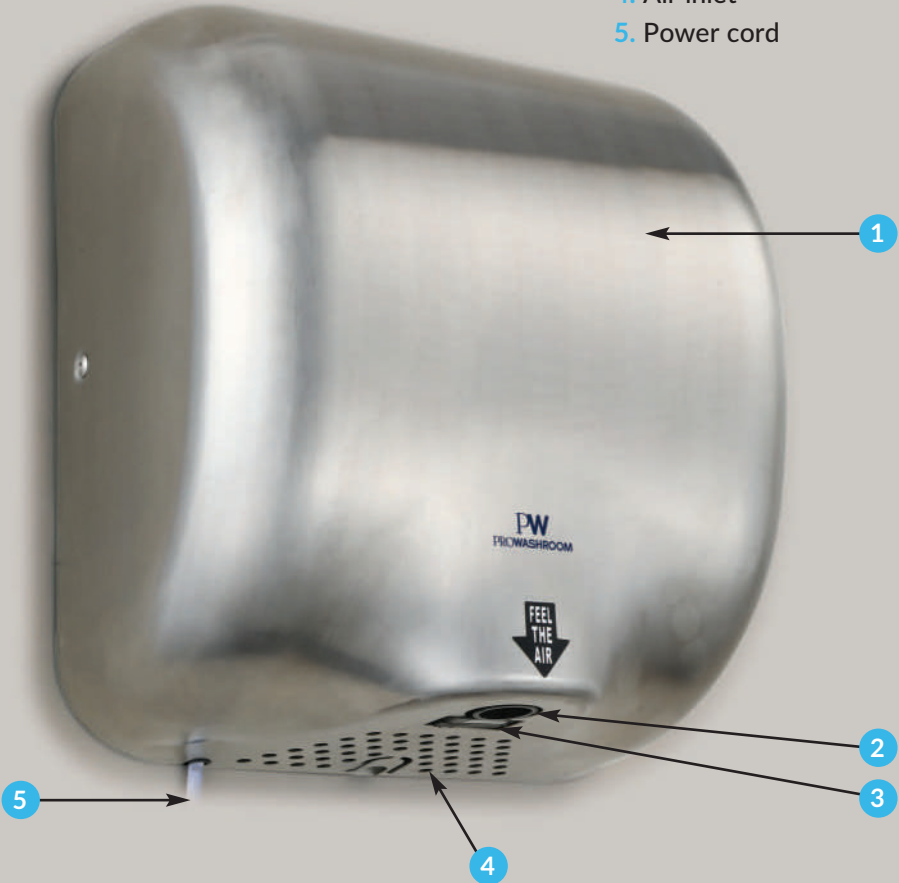
Material: Stainless steel

Uses: Commercial washrooms





1. Stainless Steel outer casing
2. Air blowing vent
3. Infrared activation sensor
4. Air inlet
5. Power cord



Installation

IMPORTANT: This unit must be installed by a qualified electrician!

Fixings supplied

- 5 x Wall plugs
- 5 x Screws
- 1 x Hanging bracket
- 1 x Anti-theft bracket
- 4 x Rubber cushion pads

Unit supplied

- 1x Hand dryer unit

Tools required (not included):

- Crosshead screwdriver
- Electric drill
- Masonry drill bit
- Pencil
- Spirit level

IMPORTANT MOUNTING INSTRUCTIONS

1. When wall mounting the unit, always check that there are no water, gas or electrical cables/pipes within or behind the wall.
2. Ensure the mains supply is switched off before commencing any electrical installation.
3. The electrical installation should be carried out in accordance with current wiring regulations and installed by a **qualified electrician**.
4. Ensure your mains supply rating corresponds with that stated on the rating label fixed to the unit.
5. The unit is double insulated and does not require an Earth (ground) connection.
6. The unit must be fixed so that the base unit and the hand held part, when fully extended, is out of reach of a person taking a bath or shower.
7. Always ensure that the installation conforms to the current edition of the wiring regulations, or the appropriate standards in your country.
8. **AFTER ANY INSTALLATION OR SERVICING BY A QUALIFIED ELECTRICIAN, THE UNIT MUST BE CHECKED AND ONLY LEFT WHEN ELECTRICALLY AND MECHANICALLY SAFE.**

Assembly parts



1. Hand dryer
2. Air outlet
3. Infrared activation sensor
4. Air inlet
5. Power cord
6. Anti-theft bracket
7. Hanging bracket
8. 4 x Rubber cushion pads - push into the 4 corner holes

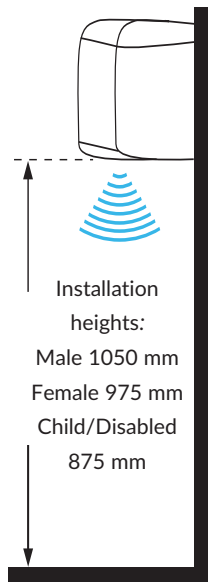
Installation area

The ProWashroom hand dryer is designed for use in dry, indoor environments only. It should be installed at heights of: 1050 mm for a male washroom, 975 mm for a female washroom, and 875 mm for a child/disabled washroom (measured from the ground to the air outlet/bottom of the dryer) and positioned at least 600 mm away from bathtubs, showers, or hand basins.

When installing multiple dryers side by side, ensure sufficient spacing for user accessibility. If placing the dryer near an adjacent wall, maintain a minimum distance of 200 mm to allow for proper access. Secure the hand dryer to the wall using the provided fixing kit.

Ensure that the electrical supply voltage does not exceed the device's maximum power rating (220-240V).

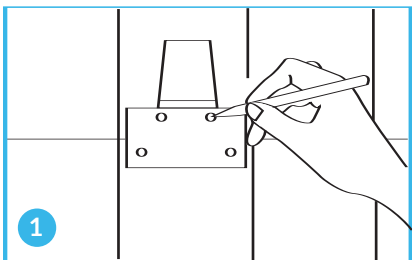
This product must be installed by a qualified professional.



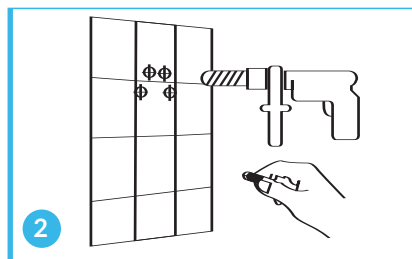
Step-by-step walling mounting

IMPORTANT MOUNTING INSTRUCTIONS

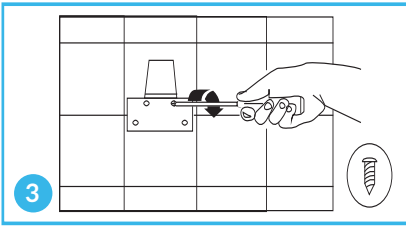
When wall mounting the unit, always check that there are no water, gas or electrical cables/pipes within or behind the wall.



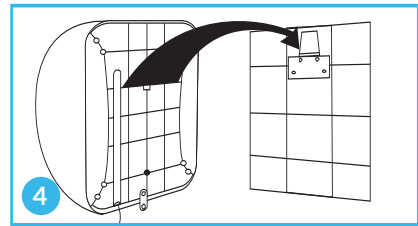
Position the hanging bracket in the desired location on the wall (see the installation heights on page 12). Mark the 4 holes to be drilled using the hanging bracket screw holes as a template.



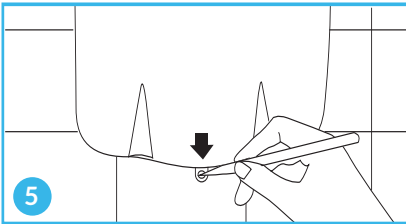
Drill the holes at the marked points using a masonry bit and insert the supplied wall plugs.



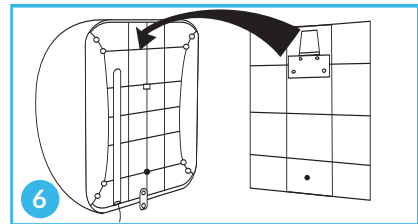
Then fix the hanging bracket to the wall using the screws provided.



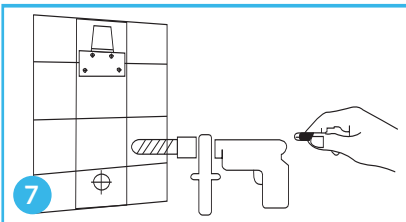
Hook the unit onto the unit bracket - checking that the 4 corner rubber cushion pads are attached first.



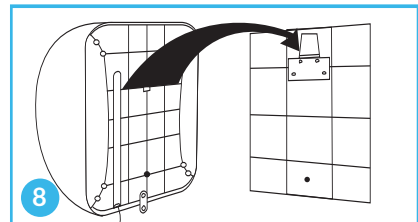
Mark the position of the anti-theft bracket hole (number 5 on the assembly parts on page 11) to be drilled.



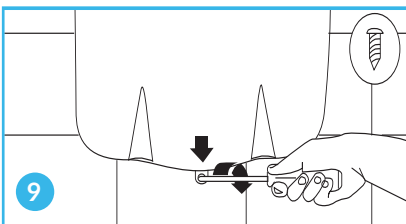
Unhook the unit from the wall bracket to reveal the marked point.



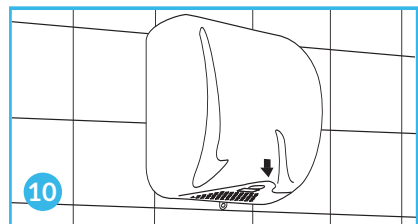
Drill the hole at the marked point and insert one of the supplied wall plugs.



Rehook the unit onto the bracket.



Align the pre-drilled hole and the anti-theft bracket screw hole and using the screw provided firmly fix the unit to the wall. It's now ready for use.



Important

Before use, make sure that the appliance air inlet grills are perfectly clean. The manufacturer will not be considered liable for any damage to persons or property deriving from failure to comply with the above recommendations, or improper use of the unit.

Operating

1. **Remove excess water:** Gently shake your hands to remove any excess water before using the hand dryer.
2. **Activate the dryer:** Place your hands under the sensor to initiate the airflow automatically.
3. **Even drying:** Slowly move your hands back and forth within the airflow to ensure even drying.
4. **Dry all areas:** Turn your hands over and repeat the process to dry both sides thoroughly.
5. **Enhance drying efficiency:** Rub your hands together to speed up the drying process.
6. **Completion:** Once your hands are sufficiently dry, remove them from under the dryer. The airflow will automatically stop.

PAT testing

When used in a workplace, hotel, industrial or commercial area this product must be safety-tested yearly by a qualified electrician (PAT Tested) in order to comply with the Electricity at Work Regulations.

Cleaning the exterior of the Hand Dryer

Make sure the hand dryer is isolated from the power source before cleaning or maintenance. To maintain the appearance and functionality of the hand dryer, follow these cleaning guidelines:

- Use a soft, dry cloth to gently wipe down the unit.
- For heavier dirt or grime, use a soft, damp cloth with a neutral cleaning agent. After cleaning, wipe the surface dry with a clean, soft cloth.
- Pay special attention to the sensor area, ensuring it remains free from dust, dirt, or residue for optimal performance.
- Only use a neutral cleaning agent. Avoid harsh chemicals or abrasive materials that may damage the surface.
- Do not use thinners, acidic or alkaline toilet cleaners, or any type of brush, as these can scratch, corrode, or weaken the hand dryer's finish.

For best results, clean the unit regularly to maintain hygiene and ensure efficient operation.

Environmental responsibilities



The importer retains his right to make changes in appearance and completeness of the item without preliminary notification to the customer.



The item is for business use only.

The manufacturer does not assume any liability for any damage caused directly or indirectly by not following this instruction manual, general safety rules, or interference in the construction of the product.

This marking indicates that this product should not be disposed with other household wastes throughout the EU. To prevent possible harm to the environment or human health from uncontrolled waste disposal, recycle it responsibly to promote the sustainable reuse of material resources. To return your used device, please use the return and collection systems or contact the retailer where the product was purchased. They can take this product for environmental safe recycling.

SERVICE WARRANTY

Hygiene Supplies Direct guarantees the product free from defects in materials and workmanship for a period of 2 years from date of purchase.

Should this unit be operated under conditions other than those recommended, or any attempts made to service or modify the unit, then the warranty will be rendered void. The product you buy may sometimes differ slightly from illustrations. This warranty is in addition to, and does not affect, your statutory rights.

If you have any problems with this product, please call our Help Desk on [0800 091 3171](tel:08000913171) or email sales@hygienesuppliesdirect.com

Scan the code to go
straight to our website



YESSS Electrical, Normanton, WF6 1TN declares that the 1300W Stainless Steel Wall Mounted Hand Dryer is exclusively manufactured and imported for Mylek.

www.hygienesuppliesdirect.com